



INFORMATION RELEASE

Contact:
Danny Straessle/Krista Sides

NR 18-051
February 23, 2018

2016-2020 Statewide Transportation Improvement Program Proposed Amendment Available for Public Comment

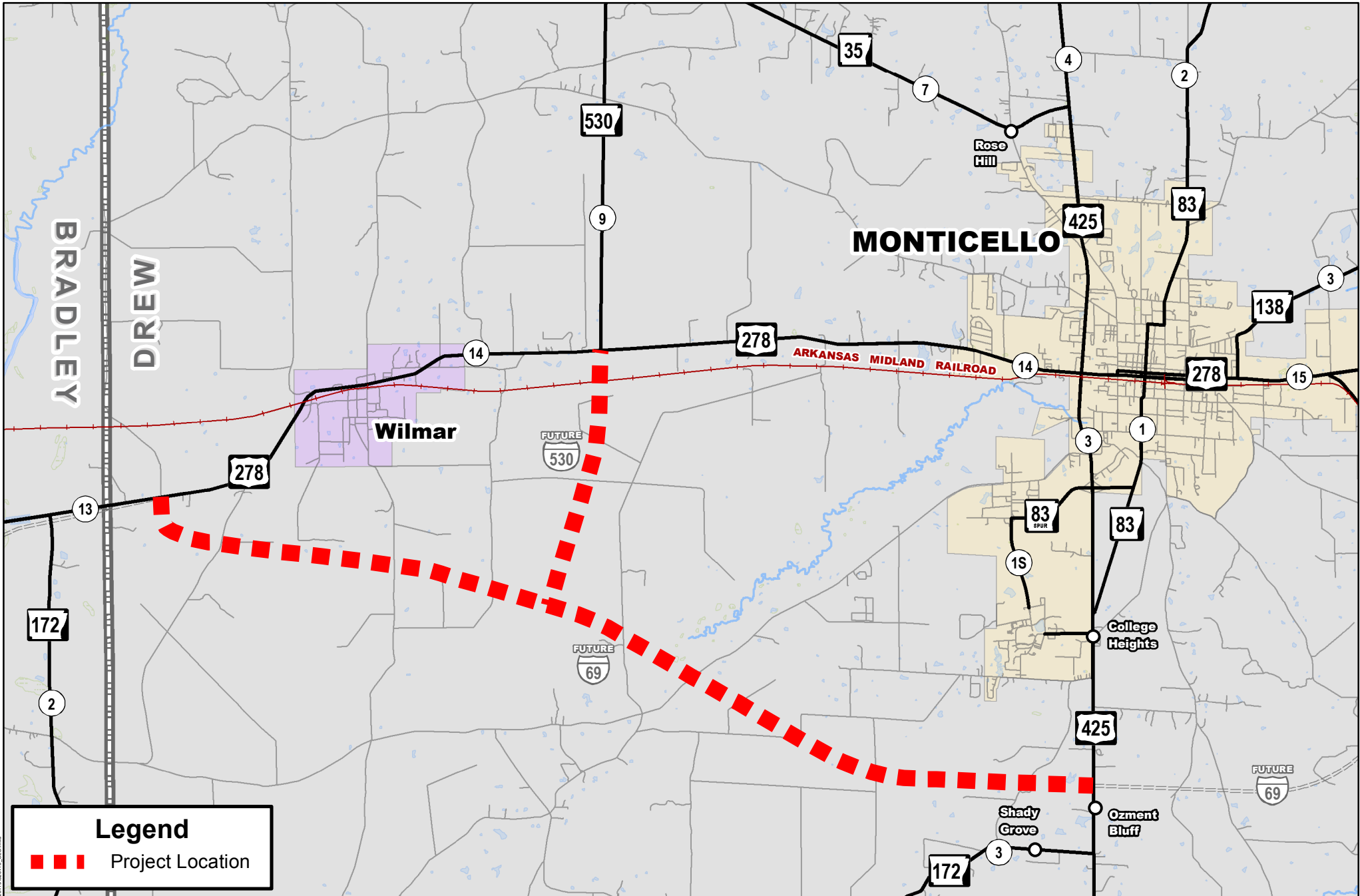
DREW AND DESHA COUNTIES (2-23) – A proposed amendment to the Arkansas Department of Transportation’s (ARDOT) Statewide Transportation Improvement Program (STIP) for Federal Fiscal Years 2016-2020 is now available for public comment.

This proposed STIP amendment would be removing one project and adding another project to the STIP. The current project that is being removed would build the western portion of the Monticello Bypass. The project being added will build the first two lanes of an ultimate four-lane facility for future Interstate 69 between U.S. Highway 278 at the east end of the Monticello Bypass to U.S. Highway 65 in McGehee. This change in priorities is at the request of local entities in Drew, Chicot, Ashley and Desha Counties. Maps are attached of each project.

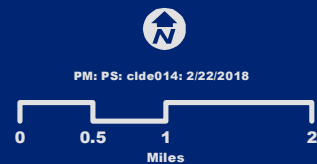
The public is invited to review and comment on the contents of this proposed STIP amendment by **Monday, March 12, 2018**. The amendment may be reviewed at the ARDOT Central Office, the State Clearinghouse, or the Southeast Arkansas Economic Development District Office. For more information, or to request a copy of this proposed STIP amendment by mail, contact ARDOT’s Program Management Division at (501) 569-2262.

All comments regarding this proposed STIP amendment should be submitted in writing to:

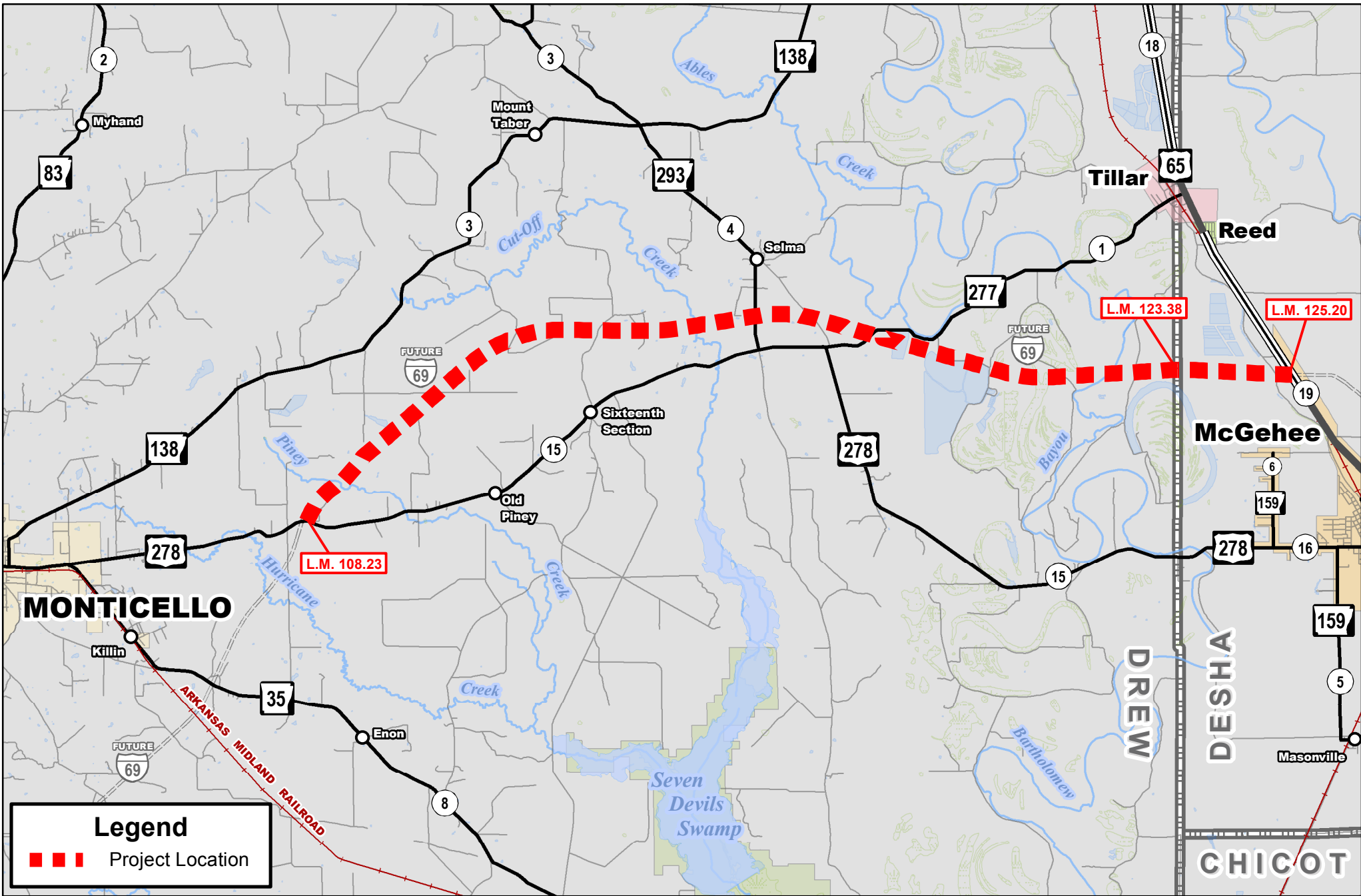
Program Management Division
Arkansas Department of Transportation
P.O. Box 2261
Little Rock, Arkansas 72203



Job 020470
Hwy. 278 West - Hwy. 425 (Monticello Bypass) (S)
Future I-69
Drew County



Document Path: S:\GIS\Program\Contacts\Berkley\020470\020470_01.D.mxd



Job 020678
Hwy. 278 - Hwy. 65 (S)
Future I-69
Drew & Desha Counties



PM: PS: cld014: 1/4/2018



Document Path: \\sart\GIS\Programs\Compass\Sketch\020678.mxd

ARKANSAS DEPARTMENT OF TRANSPORTATION
 Statewide Transportation Improvement Program (STIP) Amendment Approval Request

Date: February 23, 2018

Job (Item) Number	County	Route	Termini / Length	Type / Phase of Work	Estimated Cost Funding Breakdown (x1000)	Agency Responsible for:		Estimated Scheduling (FFY)	
						Providing Matching Funds	Carrying Out the Project		
Southeast Arkansas Economic Development District									
020470	Drew	69	Hwy. 278 West - Hwy. 425 (Monticello Bypass) (S)	P.E./ROW/Utilities	7,750 - Total 6,200 - Earmark 1,550 - State	State	State	2016	Reduce funding in STIP
020678	Drew & Desha	69	Hwy. 278 - Hwy. 65 (S) (Future I-69)	New Location	60,250 - Total 48,200 - Earmark 12,050 - State	State	State	2020	Add to STIP

Submitted by: _____
Division Engineer - Program Management

Date: _____

(For Federal Highway Administration Use Only)

Approved by: _____ Date: _____